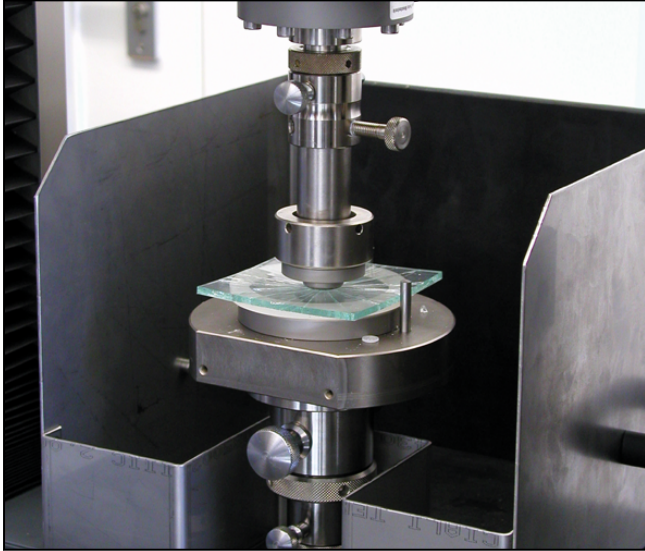


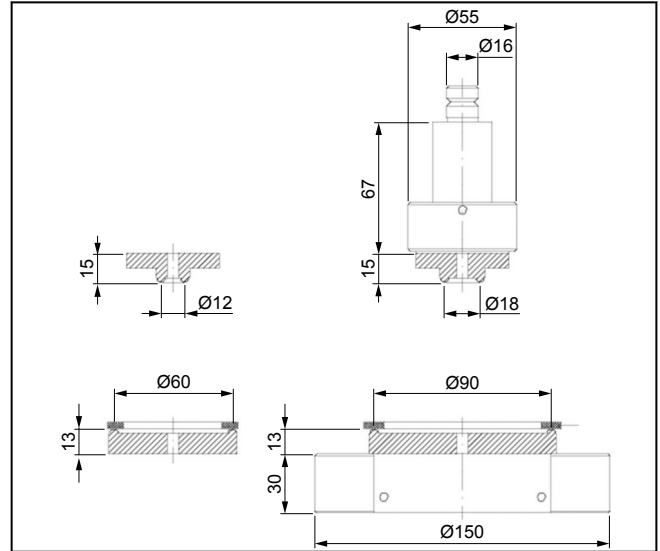
Product Information

Double-ring flexure test kit for testing glass materials

CTA: 41197 41196



Double-ring flexure test kit for testing glass materials



Double-ring flexure test kit for testing glass materials, general view

Applications

Tests to EN 1288-5

- **Specimen material:**
glass materials

Advantages and features

- The different support and load rings allow glass specimens 66 x 66 mm and 100 x 100 mm to be tested.
- The flexure test kit has a maximum load capacity of 50 kN.
- A collecting tray and safety shield are available to provide protection against flying glass fragments.
- Simple, accurate positioning of glass specimens (round or square) via centering stops for the relevant specimen size.

Product Information

Double-ring flexure test kit for testing glass materials

Technical data

Type Item No.	Double ring flexure test kit 324522 ¹⁾	
Test load F_{\max}	50	kN
Connection, upper	Adapter (16H7)	
Connection, lower	Connector TK 40/75 mm	
Scope of delivery	Basic unit for mounting support ring and load ring	

1) A safety device is required.

Accessories required

(1 x required)

Type Item No.	Support rings and load rings 324526	Support rings and load rings 324524	
Test load F_{\max}	20	50	kN
Load ring:			
Outer diameter	Ø 47	Ø 47	mm
Radius of load ring	R 6	R 9	mm
Curvature radius of the supporting surface	2.5	2.5	mm
Support ring			
Outer diameter	Ø 65	Ø 95	mm
Curvature radius of the supporting surface	2.5	2.5	mm
Radius of support ring	R 30	R 45	mm
Specimen dimensions			
Height	1 to 6	2 to 9	mm
Width	66	100	mm
Depth	66	100	mm
Specimen diameter	66	100	mm
Ambient temperature	+10 to +35	+10 to +35	°C
Weight of load ring and support ring, approx.	0.3	0.6	kg
Scope of delivery for silicone rubber spacer rings	10	10	piece(s)

Optional accessories

Support ring and load ring

Description	ArticleNumber
Collecting tray for glass shards and specimen remains; for AllroundLine and ProLine only	324528