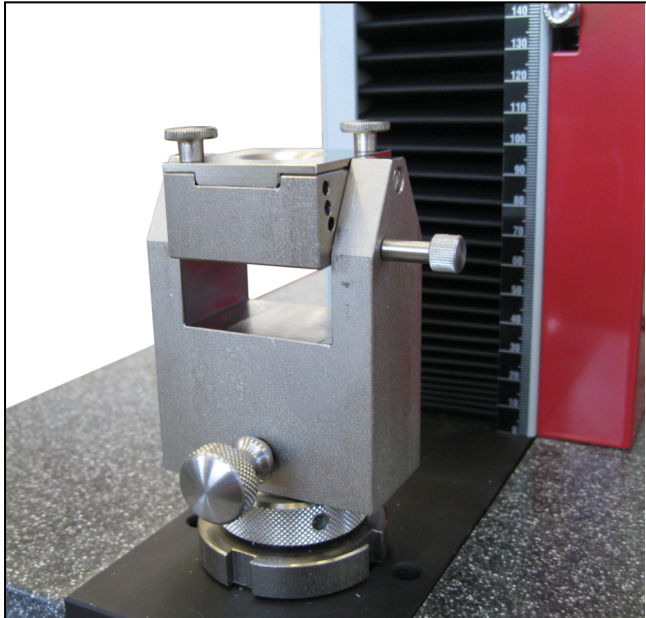


Product Information

Needle puncture test fixture

CTA: 99929 69389



Needle puncture test fixture with variable test angle

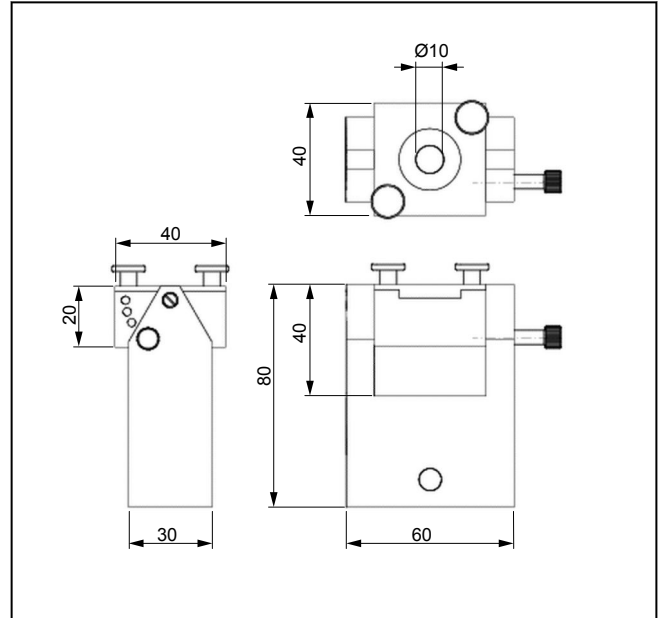
Applications

The needle puncture test fixture is used to determine the puncture force of needles to ISO 11040-4. Typical medical applications are, for example, puncture tests on skin replacement material or penetration tests on standard films.

Function description

The needle puncture test fixture consists of a base body with a swivel able specimen holder.

The material to be punctured is gripped in the specimen holder. The test angle can be set to four different angles by means of a lock-pin.



Advantages and features

- Variable test angle to test axis; can be locked at 30°, 45°, 60° and 90°
- Needles with a diameter up to 8 mm or injection needles and other connectors with Luer cones can be mounted in the optionally available holders
- ZwickRoell's testing software combined with the Traceability option fulfills the requirements necessary for compliance with all FDA 21 CFR Part 11 criteria

Product Information

Needle puncture test fixture

Technical data

Type Item no.	Needle puncture test fixture 022358	
Maximum test load (Fmax)	50	N
Specimen dimensions		
Specimen width	20	mm
Specimen thickness	up to 1	mm
Specimen gripping and puncture opening	Ø 10	mm
Test angle, can be locked in with a pin	30°, 45°, 60° and 90°	
Connecting diameter	Ø 20	mm
Ambient temperature	+10 ... +35	°C

Accessories required

1 x required

Description	Item number
Needle holder (non-corrosive), to mount needles with a diameter of 0 to 8 mm	022357
Mounting to fix injection needles and other connectors with Luer cones	024560