

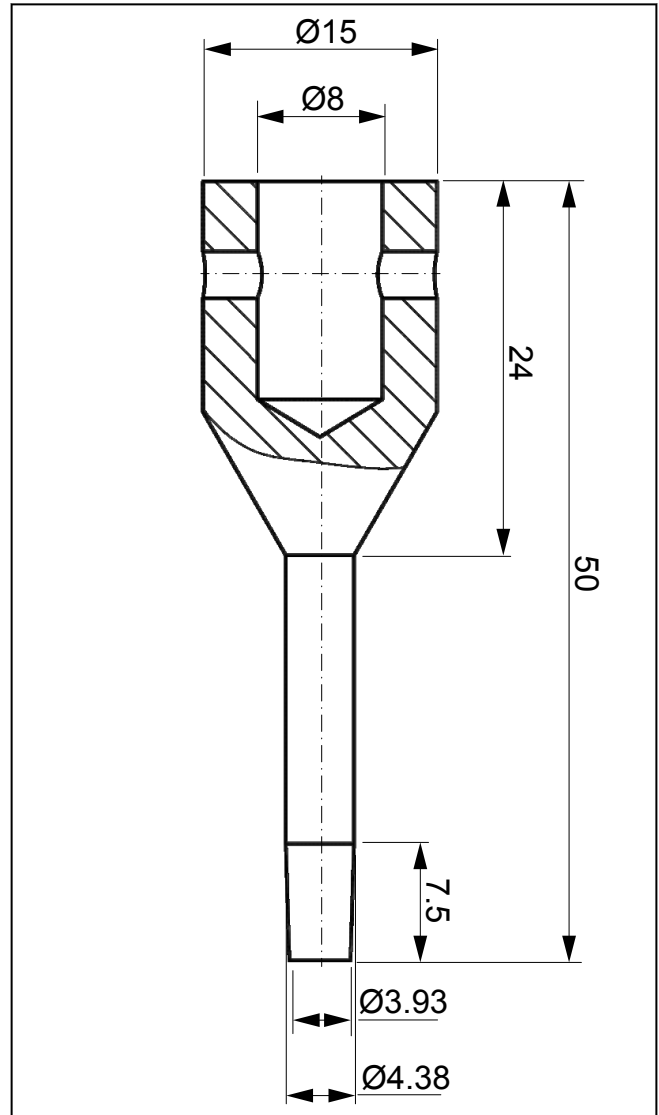
Product Information

Mounting for affixing injection needles

CTA: 99934 213171



Mounting for attaching injection needles with Luer cones



Mounting for attaching injection needles, overview

Applications

Holder with Luer taper for retaining injection needles and other connectors. For piercing tests on foils and skin substitute to ISO 11040-4 and for fragmentation tests on bottle closures.

Advantages and features

- Standard holder for connecting to various medical engineering components
- Fast change of needles and connectors with Luer Konus
- ZwickRoell's Expanded Traceability software option has the necessary requirements to satisfy all criteria of FDA 21 CFR Part 11.

Product Information

Mounting for affixing injection needles

Technical data

Type Item No.	Mounting for attaching injection needles 1083751 ¹⁾	
Maximum test load F _{max}	500	N
Material	Stainless steel	
Connection diameter	Ø 8	mm
Ambient temperature	+10 ... +35	°C
Scope of delivery	1	piece

1) A safety guard or safety device is required for this.

Accessories required

(1x required)

Description	Item number
For positioning bottles with closures:	
Compression platen up to 20 kN, square (120 x 120 mm) Connection via a connector (TK75)	318466
Compression platen to 20 kN, round (Ø 150 mm) Connection via a connector (TK75)	318460
For gripping foils and skin substitute	
Needle puncture test fixture with variable test angle Specimen thickness 0 to 1 mm Specimen width 20 mm Mounting stud, Ø 20 mm	022358