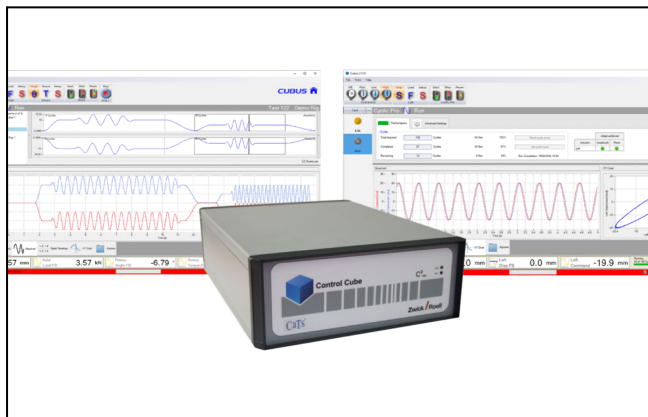


Product Information

Cubus Software 2.1 Update

CTA: 236280 236281



One measurement and control system: The servo-controller Cube and the testing software Cubus

Expertise and experience

A new update is now available for the Cubus testing software has already been proven in several hundreds of installations worldwide. In addition to general developments including Windows 11 compatibility, a number of customer suggestions and requests were also incorporated. Our new version is not only more efficient and user friendly, but also suitable for use with Microsoft Windows 11.

Since Microsoft will end support for Windows 10 in October 2025, we recommend switching to Windows 11 as soon as possible to ensure future viability. Please note that Cubus testing software has only been tested with and released for Windows 11 as of Version 2.1.88.

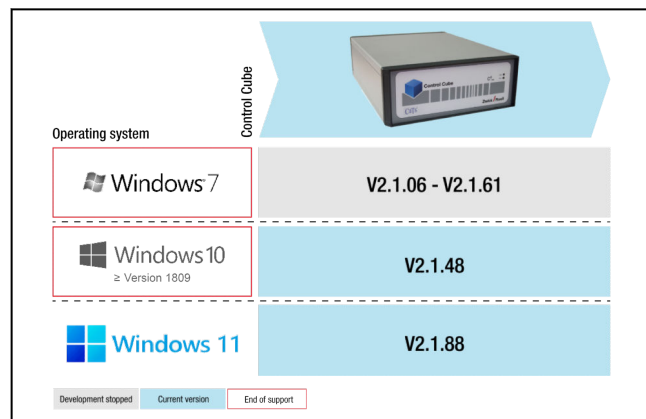
Improved performance

Cubus is now a high-performance and stable 64-bit application for fast test data processing and improved memory usage.

Safety is top priority

Various functionalities have been implemented to improve safety:

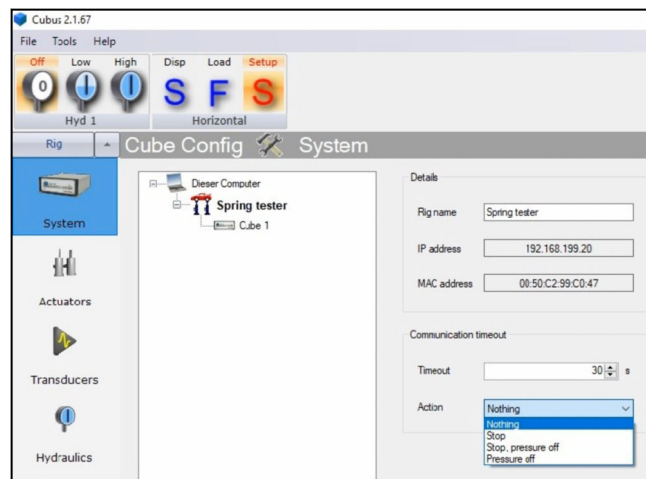
- Automatic plausibility check of virtual channels prior to pressure application; if necessary, a warning message is displayed. The corresponding explanation can be found in the results report so that settings can be adjusted accordingly and the test sequence becomes traceable.
- Using a new virtual function of the Control Cube servo controller, signals can be shared across several servo controllers.



Compatibility of Cubus testing software and operating system

- Triggering of preselected actions in case of communication interruption (e.g. stop test, turn off pressure, or both). Individually configurable timeout actions that can be adapted to specific user requirements have been added.
- Checking for missing or implausible limit values; if applicable, a user notification is displayed and the test cannot be started.

CTA: 236589



Product Information

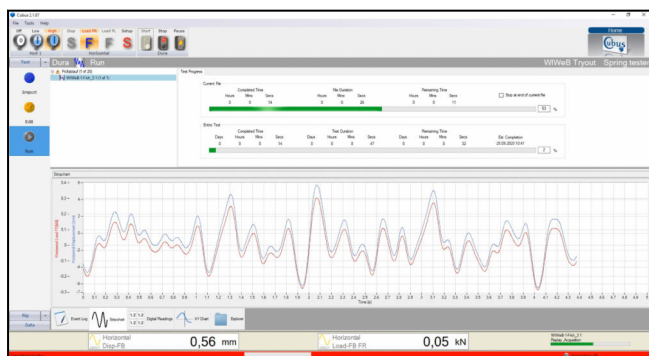
Cubus Software 2.1 Update

Optimized testing and data management

We made the testing and data management processes more efficient:

- Optional mode change at the end of the test in the Ramp Test module to go directly to the next element.
- In the Ramp Test module, there are two new tab displays that provide an X-Y diagram and a live time display of the entire test, regardless of the test duration (this requires a license).
- The new Cubus Explorer is now even faster and more user friendly. The maximum number of sequence repetitions was increased to one million, which is sufficient for any type of application.
- The process of exporting the data that is collected in cyclic tests is now automated—a significant improvement in efficiency and usability. Based on these improvements, manual exports are no longer necessary, saving additional time.
- The data can now be exported in RPCIII format and directly imported into the customer's analysis software.

CTA: 236681



- We have also improved the folder structure to simplify handling the measurement data.
- The data reduction at reversal point now makes it possible to skip any number of reversal points during export, which provides more flexibility in defining the export data.
- With the blend mode control of the block program, an adjustment in several modes, such as travel control to reach peak loads, is now available.
- There is a new user-defined cyclic element in the block program with which the generator profile can be defined from a 256-line ASCII test table.
- The virtual transducer function enables the input of a mathematical formula for calculated (virtual) channels. These can be used as monitoring or control variables. Functions including digital display, oscilloscope, data acquisition and limit values are also supported for virtual channels. These functionalities are available up to the maximum system frequency.

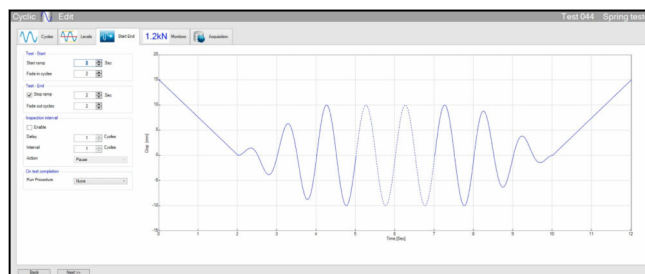
All data at ambient temperature.

Simple user management and user interface functionality

Simplification of daily test tasks:

- The user name is now stored in the user management program to improve traceability.
- Optimized layout of the settings menu.
- Expansion of available shortcuts for improved efficiency and speed.
- New function element for temporary interruption of a test, e.g. for visual inspection of a specimen. As an option, a regular recurring interval can also be set.

CTA: 236604



Now is a great time to update your Cubus testing software to take advantage of the new functionalities. Contact: aftersales@zwickroell.com

More information on Cubus can be found on our website at www.zwickroell.com.

Subject to change in the course of further development.