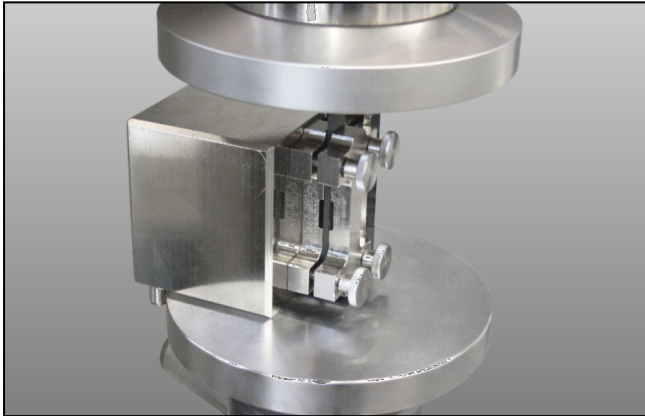


## Product Information

### Compression test kits (end-loading)

CTA: 44755 296271



Compression test kits (end loading) between two compression platens, for measuring the compression modulus

#### Applications

Tests

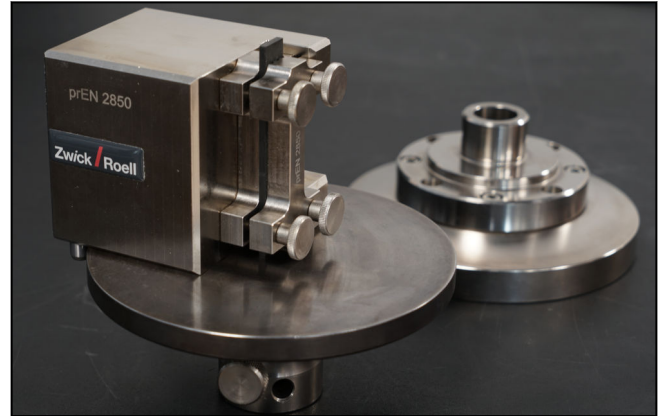
- based on ASTM D695, developed in various standards
- to ASTM D3846 on slotted single-lap specimen; measurement of in-plane shear

#### Function description

The compression test kit is used for testing fiber composites.

The specimen is loaded longitudinally between two compression platens.

Two buckling supports with longitudinal rails are used when measuring compressive strength. They prevent



Compression test kits (end loading), for measuring the compressive strength

premature material failure due to bending. Two buckling supports with notch are used to accommodate the strain gauges for measurement of the compression modulus. A mount with fixed stops ensures exact axial alignment of the specimen.

#### Advantages and features

- Tool-free specimen insertion
- Exact centering to compression axis of testing machine
- Compression platens can be replaced independently of the test fixture in the event of wear.

## Product Information

### Compression test kits (end-loading)

#### Technical data

Item No.	062635	062636	
Compression test kit (end loading) to	prEN 2850 Type B, ISO14126 Method 2, AITM1-0048	ASTM D695, Boeing BSS 7260, SACMA SRM 1R-94, DIN 65375, ASTM D3846	
Test load $F_{max}$	50	50	kN
Specimen dimensions			
Thickness	1 ... 6	1 ... 6	mm
Length	75 ... 80	79.4	mm
Width	12.5	12.7 ... 19	mm
Ambient temperature	-80 ... +300	-80 ... +300	°C
Weight, approx.	3.5	3.5	kg
Scope of delivery			
2 buckling supports with longitudinal rails, length	70	73	mm
2 buckling supports with notch, length	70	73	mm
Mount with fixed stops	1	1	piece

#### Accessories required

- Two through hardened compression platens  $\varnothing 136$  mm - item no. 370310 or 024550