

Product information

Portable hardness testers



N4 - Portable Hardness Testers

The hardness tester possesses a clamping device consisting of clamp in light-alloy with quickly adjustable threaded spindle and clamping toggle. Acc. to customer's request test unit N1A 001 with spring sleeve or one of the load adjustable test units can be selected.

Test method equipment available for

All Rockwell test methods acc. to EN ISO 6508, ASTM E-18. Test methods according not to standards in brinell HBD are possible in test load range 294 - 1839 N (30 - 187.5 kgf)

Load-adjustable test units

(Capacity reduce 55mm)

- **N1P 000** – for plastics testing to EN ISO 2039-1 – (5, 13.5, 36.5, 98 kgf)
- **N1R 000** – for Rockwell testing to EN ISO 6508 – (60, 100, 150 kgf)
- **N1S 000** – for Super Rockwell testing to EN ISO 6508 – (15, 30, 45 kgf)

Operation

The part to be tested is clamped between the anvil and the test head, after which the load is applied to the indenter. Subsequently the reading is taken from the dial gauge.

Modell	Throat depth	Capacity
N4A 000	85 mm	0–145 mm
N4B 000	130 mm	0–235 mm
N4C 000	180 mm	0–335 mm
N4E 000	110 mm	0– 20 mm

Test unit N1A 001 with spring sleeve

N2H (15 kgf)	N2G (31.25 kgf)	N2E (60 kgf)
N2F (100 kgf)	N2D (187.5 kgf)	N2C (30 kgf)
N2L (45 kgf)	N2B (62.5 kgf)	N2A (150 kgf)

Product information

Portable hardness testers



N6P 000 - Portable hardness tester for measuring the hardness in boreholes

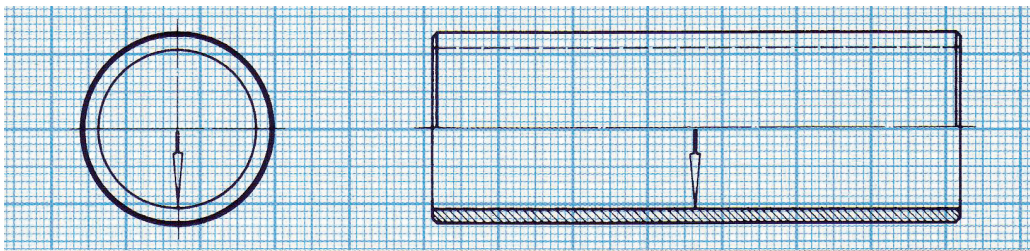
All devices consist of test unit N1E 000 (complete with dial gauge, dial gauge cover and spring sleeve) with load lever and Intest sensor with tensioning nut, clamping clip and spring link, including test sample. The standard design consists of load level 62.5, HRC hardness value indicator, device case, hardness comparison table and instruction manual.

Application

For bore diameters from 36–110 mm
Immersion depth up to 400 mm

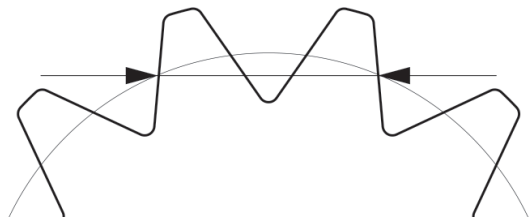
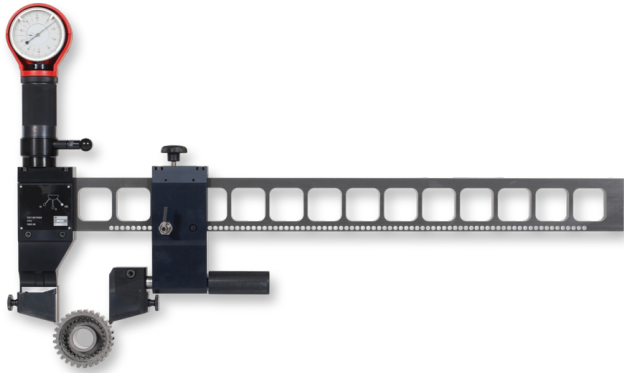
Operation

The testing machine is positioned in the bore and fixed by clamping action. The test load is applied via hand lever. Subsequently the reading is taken from the dial gauge in HRC values.



Product information

Portable hardness testers



N7 - Portable hardness testers for measuring the hardness on tooth flanks

All devices consist of test unit N1E 000 (complete with dial gauge, dial gauge cover and spring sleeve) with load lever, the measurement head with built-in spring link, including hardness testing diamond and the clamping device. The standard design consists of a load level 62.5, HRC hardness value indicator, tool kit, hardness comparison table, device case and instruction manual.

Application N7F 000

External teeth module 2–10, max. tooth measurement width 140 mm.

Application N7P 000

External teeth module 3–35, tooth measurement widths max. 700 mm.

Operation

The testing machine is positioned on the work piece and clamped to the requested test point. The test load is applied via hand lever. Subsequently the reading is taken from the dial gauge.